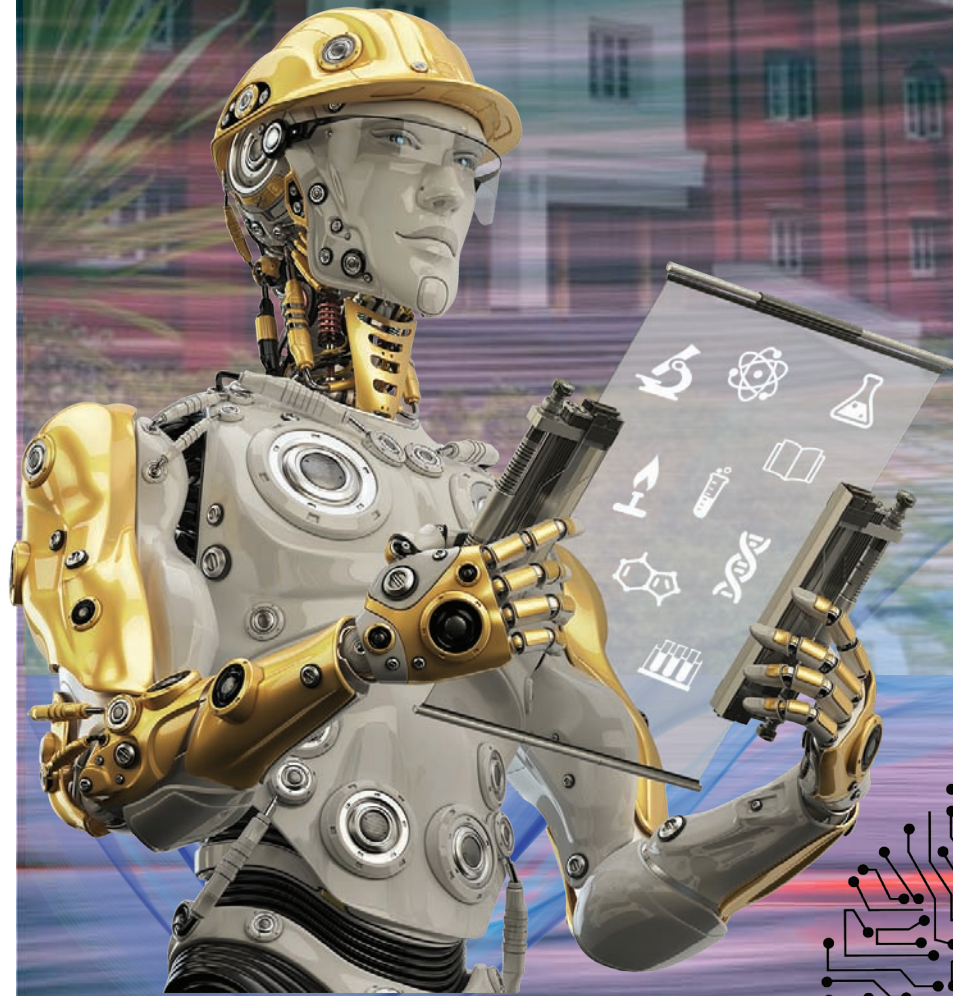


# B.Tech

in AI & ML



**OmDayal Group of Institutions**  
**ENGINEERING | ARCHITECTURE | MANAGEMENT**

AICTE & COA Approved | NAAC Accredited | MAKAUT (WBUT) Affiliated



The world of **Computer Science and Engineering (CSE)** has been significantly impacted by the arrival of Artificial Intelligence (AI) and Machine Learning (ML). AI & ML is a rapidly growing field that's driving innovation in various sectors, from healthcare and finance to transportation and entertainment.

**Artificial Intelligence and Machine Learning (AI & ML)** are interconnected fields that have significantly influenced various industries and aspects of daily life.

**AI & ML**, essentially talking about integrating the principles, algorithms, and techniques of artificial intelligence and machine learning into the domain of computer science and engineering. AI & ML are integral components of the modern CSE world, driving innovation, transforming industries, and shaping the way we interact with technology.



# Why B.Tech in AI & ML :

- 1. High Demand:** AI and ML have permeated virtually every industry, from healthcare to finance, from manufacturing to entertainment. As companies increasingly adopt AI-driven solutions to enhance efficiency, improve decision-making, and innovate, the demand for professionals with expertise in AI and ML continues to rise.
- 2. Diverse Opportunities:** With a background in CSE augmented by AI and ML skills, you'll have a wide array of career opportunities to explore. You could work as a machine learning engineer, data scientist, AI researcher, software engineer specializing in AI, robotics engineer, or even in roles like AI ethics consultant or AI product manager.
- 3. Competitive Salaries:** Due to the high demand and specialized skill set, professionals with expertise in AI and ML command competitive salaries. Companies are willing to offer attractive compensation packages to attract and retain top talent in this field.
- 4. Innovation and Impact:** Working at the intersection of AI and ML allows you to be at the forefront of technological innovation. Whether you're developing autonomous vehicles, creating personalized healthcare solutions, or enhancing cybersecurity systems, your work can have a significant impact on society.
- 5. Continuous Learning:** AI and ML are rapidly evolving fields, which means there's always something new to learn. This dynamic environment fosters a culture of continuous learning and professional growth, keeping your skills relevant and ensuring that you remain at the cutting edge of technology.
- 6. Global Opportunities:** The demand for AI and ML expertise is not limited by geographic boundaries. Whether you aspire to work for tech giants in Silicon Valley, leading research institutions in Europe, or emerging startups in Asia, there are opportunities available worldwide.
- 7. Entrepreneurial Ventures:** Armed with expertise in CSE, AI, and ML, you could also choose to embark on entrepreneurial ventures. Whether you're launching a tech startup focused on AI-driven products or providing consulting services to businesses looking to integrate AI into their operations, the possibilities are endless.



## CAREER PROSPECT



The career prospects for individuals with expertise in **B.Tech in Artificial Intelligence (AI) and Machine Learning (ML)** are exceptionally promising. B.Tech in Artificial Intelligence (AI) and Machine Learning (ML) opens up a multitude of career opportunities across various industries. As AI and ML technologies continue to advance, the demand for professionals skilled in these areas is rapidly increasing.

- 1. MACHINE LEARNING ENGINEER:** Designs and implements ML models and algorithms to solve complex problems.
- 2. DATA SCIENTIST:** Analyzes large datasets to extract insights and inform business decisions.
- 3. AI RESEARCH SCIENTIST:** Conducts research to advance AI technologies and develop innovative solutions.
- 4. AI SOFTWARE ENGINEER:** Develops software applications integrating AI functionalities.
- 5. NATURAL LANGUAGE PROCESSING (NLP) ENGINEER:** Specializes in allowing machines to understand and process human languages.
- 6. ROBOTICS ENGINEER :** Designs and builds robots that perform tasks separately using AI and ML.
- 7. BUSINESS INTELLIGENCE DEVELOPER:** Utilizes AI and ML to analyze business data and support strategic decisions.
- 8. AI CONSULTANT:** Advises organizations on integrating AI solutions to enhance operations.

# Industry Sectors are **Hiring** AI & ML Professionals:

- **Technology:** Companies like Google, Amazon, and Microsoft are actively recruiting AI and ML experts.
- **Finance:** Financial organisations are investing profoundly in AI for tasks such as fraud detection and risk assessment.
- **Healthcare:** AI is used for predictive analytics, personalized medicine, and patient care optimization.
- **Manufacturing:** AI-driven automation improves production efficiency and quality control.
- **E-commerce:** Businesses leverage AI for recommendation systems and customer experience enhancement.

# **ELIGIBILITY CRITERIA** for B.Tech in Artificial Intelligence and Machine Learning

1. 10+2 Board Exam – 45% aggregate in Physics, Mathematics along with Chemistry / Biology / Computer Science. Candidates must clear Theory & Practical examination. 40% marks in case of candidates of SC/ST/OBC in the above subjects taken together.
2. Valid rank in WBJEE or JEE (Main) 2025

# The lower age limit is 17 (seventeen) years as on 31.12.2024  
# No upper age limit.





## CAMPUS -

Plot No. 38(P), 38(A), 39(P) & 39(A), Uluberia Industrial Growth Centre,  
Near Birshibpur Railway Station, Howrah – 711316, West Bengal, India  
+91 33 71300253 / +91 33 71300254

## CITY OFFICE -

Queens Mansion, Gate No. 4, 3rd Floor, Flat No. 40, 12 Park Street, Kolkata – 700071  
West Bengal, India  
+91 33 7133 0200



For any queries call between Monday to Saturday 10:30am to 6:30pm